

Clamping, Fixturing and Positioning Components



Hoist Rings



Toggle Clamps



**Carr Lock® System
For Fast Fixturing**



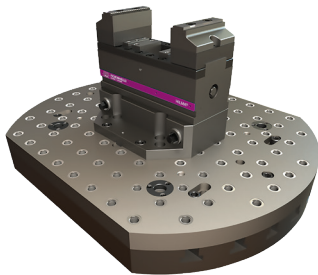
Tiny Vise® Edge Clamps



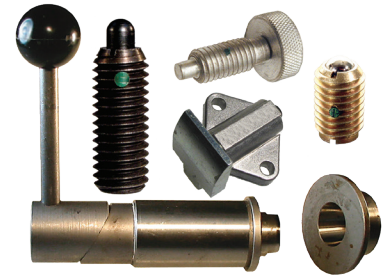
Alignment Pins



Handles and Knobs



**CL5® Quick-Change
5-Axis Workholding**



**Spring-Loaded
Devices**

Carr Lane Offers You More:

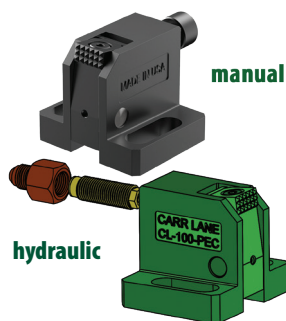
- More than 100,000 products - you spend less time searching, which saves you time and money
- Our online catalog at CarrLane.com is searchable by part number, product name or item category
- Wide distribution network. To locate your nearest distributor, visit CarrLane.com/find-a-distributor
- Carr Lane is consistently recognized as one of the top manufacturers in the industry

Carr Lane offers standard components to help you improve quality and productivity. To search for products online, visit CarrLane.com.



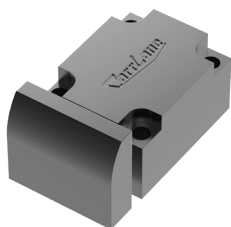
Carr Lane's product line is constantly evolving to provide customers with the latest in industrial parts technology. Our newest products are denoted by green ribbons and stars in our online catalog. Browse the latest in Carr Lane technology, with updated Alignment Pins, Hoist Rings, Work Supports, Locators, Clamps & more.

New Products



Pivoting Edge Clamps

- Replaceable serrated gripper made of hardened tool steel
- Clamping force provides both forward and downward force at the same time
- Adjustable slotted base, secured with two Socket Head Cap Screws
- Can be converted to hydraulic operation



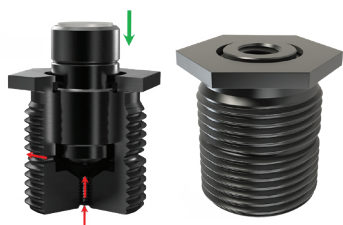
Heavy-Duty Spring Stops

- Largest and strongest spring stop buttons we manufacture
- Mid-stroke spring force of 100 lbs. means no additional clamps are needed
- Large contact face holds the workpiece together until project is complete



Hoist Eye 360®

- 360 degree rotation after installation, aligning it with the pulling direction
- Can be used at full rated load capacity regardless of pulling angle from the bolt axis
- Available in standard sizes from 3/8-16 to 1"-8



Air Rest Buttons

- Allows using pneumatic position control to detect proper workpiece loading
- Proper placement of workpiece will full retract plunger into the body
- Can be read using a pressure sensor which can be tied into PLC or a control system



Captive Locating Screw

- Available in sizes from 1/4-20 to 1/2-13 and metric sizes from M6 to M12 with screw lengths from 1 1/4" to 3" or 30 mm to 75 mm
- Can be used to simply clamp a workpiece or used in locating and clamping
- When fully retracted it will prevent removal through spring force exerted from the bushing spring clip